

# PARADISE

The seemingly random, fervidly anarchic nature of Paradise Collection is what makes it so appealing. For these carpets the weavers used recycled Saree Silk and created the patterns intuitively. This vitality is skillfully showcased and it is reproducible with lots of color variations.



## **CHANDLER - 7'11 X 9'8 FT**

**SKU:** SS1-20773



## **DREAMSCAPE - 5'5 X 7'8 FT**

**SKU:** 26430



## **INTRIGUE - 8'0 X 10'0 FT**

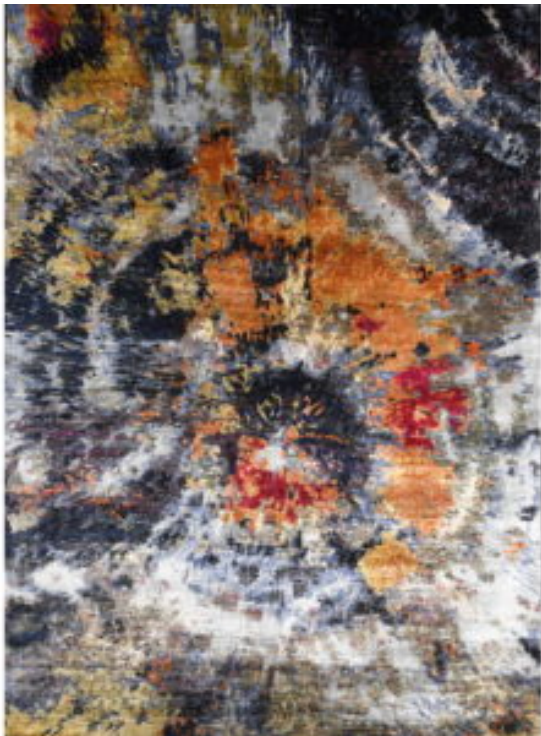
**SKU:** 20745



The seemingly random, fervidly anarchic nature of Paradise Collection is what makes it so appealing. For these carpets the weavers used recycled Saree Silk and created the patterns intuitively. This vitality is skillfully showcased and it is reproducible with lots of color variations.

## **PR-002 BLUE**

**SKU:** PR-002



The seemingly random, fervidly anarchic nature of Paradise Collection is what makes it so appealing. For these carpets the weavers used recycled Saree Silk and created the patterns intuitively. This vitality is skillfully showcased and it is reproducible with lots of color variations.

## **PR-003 MULTI**

**SKU:** PR-003





The seemingly random, fervidly anarchic nature of Paradise Collection is what makes it so appealing. For these carpets the weavers used recycled Saree Silk and created the patterns intuitively. This vitality is skillfully showcased and it is reproducible with lots of color variations.

## **PR-004 MULTI**

**SKU:** PR-004



The seemingly random, fervidly anarchic nature of Paradise Collection is what makes it so appealing. For these carpets the weavers used recycled Saree Silk and created the patterns intuitively. This vitality is skillfully showcased and it is reproducible with lots of color variations.

## **PR-001 RUST**

**SKU:** PR-001